

ICT-Security by...

*insinova*

# Ivanti Device Control

former Lumension Device Control

Screenshots bei insinova ag – [www.insinova.ch](http://www.insinova.ch)

Schluss mit  
**DATENVERLUST**

Verhindern Sie die Offenlegung und  
den Verlust kritischer Daten.



# Schreiben auf Wechseldatenträger wird hier nicht erlaubt:

The screenshot shows the Sanctuary Management Console interface. The main window is titled "Sanctuary Management Console - [Device Explorer]". It features a menu bar (File, View, Tools, Reports, Explorer, Window, Help) and a toolbar. On the left, there is a "Control Panel" with sections for "Modules" (Device Explorer, Log Explorer, Media Authorizer), "Tools", "Reports", and "Help". The main area is a tree view of "Device Explorer" with columns for "Devices", "Permissions", "Priority", "Filters", "Details", and "Comments".

Devices	Permissions	Priority	Filters	Details	Comments
Default settings					
Biometric Devices					Device re-plug might be required to grant access for ahead...
COM/Serial Ports					
DVD/CD Drives					
Everyone	None	High			
Everyone	Event Notificatio...	High			Message: Sanctuary has denied access to this device
Everyone	Enabled				Shadow Option
Floppy Disk Drives					
Imaging Devices					
LPT/Parallel Ports					
Modem/Secondary Network Access ...					
Palm Handheld Devices					
Printers (USB/Bluetooth)					
PS/2 Ports					Reboot required to enforce updated permissions.
Removable Storage Devices					
Everyone	100 MB				Copy Limit
Everyone	Event Notificatio...	High			Message: Sanctuary has denied access to this device
Everyone	Enabled				Shadow Option
SANCTUARY\Administrator	Read	High			
RIM BlackBerry Handhelds					
Smart Card Readers					
Tape Drives					
User Defined Devices					
Windows CE Handheld Devices					
Wireless NICs					
Machine-specific settings					
WORKGROUP					

A "Permissions" dialog box is open, showing a table with columns: Name, Location, Permissions, Priority, Filters, Scope.

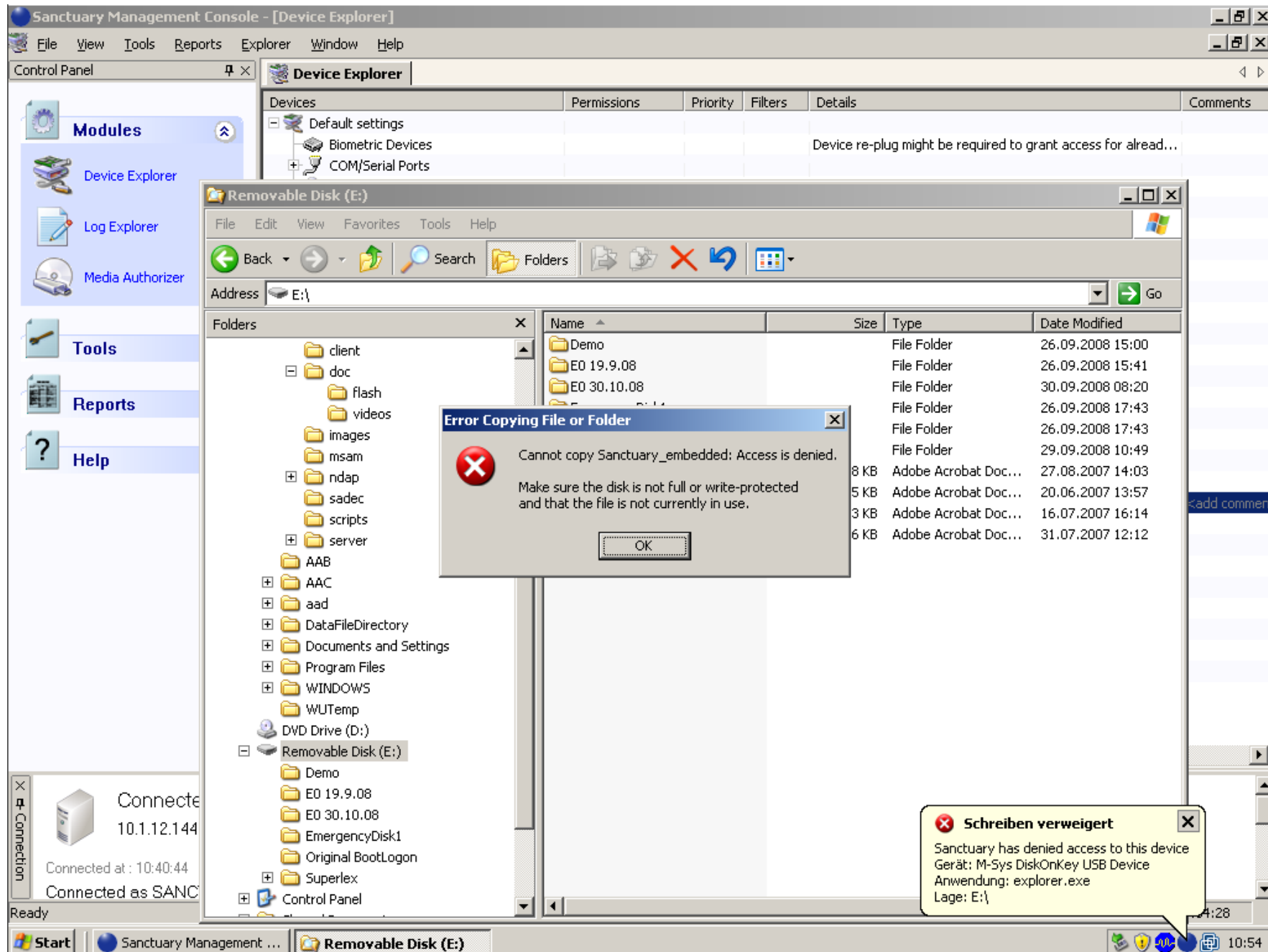
Name	Location	Permissions	Priority	Filters	Scope
Administra...	SANC...	Read	High		All

Below the dialog box, there are sections for "Permissions" (with a "Low Priority" checkbox) and "Encryption" (with radio buttons for "Both", "Encrypted", "Unencrypted").

At the bottom left, a "Connection" status bar shows: "Connected to : SANCTUARY.INSINOVANET.CH 10.1.12.144", "Connected at : 10:40:44 Last Update : 11:00:50", and "Connected as SANCTUARY\Administrator as an Enterprise Administrator :".

The Windows taskbar at the bottom shows the Start button, the Sanctuary Management Console icon, and the system tray with the time 11:01.

# Ivanti Device Control zeigt die konfigurierte Meldung beim Kopierversuch an:



Die zentrale Auswertung der Dateien zeigt, was kopiert wurde.  
Die Dateien können zentral gesammelt und betrachtet werden:

Sanctuary Management Console - [Log Explorer]

File View Tools Reports Explorer Window Help

Control Panel Log Explorer

Shadow exp by size desc this month Templates... < > Fetch log... Settings Stop Pause Query

Traced On (Endpoint time)	File Name (Full)	Attachment	Size	SID	Computer
07.01.2009 11:19:39.760	E:\Temp\Copy (2) of SecureDoc_RME_Brochure2...	False	1 MB	S-1-5-21-789336...	sanctuary
07.01.2009 11:19:44.467	E:\Temp\Copy of SecureDoc_RME_Brochure2.pdf	False	512 KB	S-1-5-21-789336...	sanctuary
07.01.2009 11:25:10.275	E:\Temp\Copy of SecureDoc_RME_Brochure2.pdf	False	1 MB	S-1-5-21-789336...	sanctuary
07.01.2009 11:25:38.055	E:\Temp\openhtml.exe	False	22 KB	S-1-5-21-789336...	sanctuary
07.01.2009 11:25:39.097	E:\Temp\readme.rtf	False	648 KB	S-1-5-21-789336...	sanctuary
08.01.2009 14:53:40.312	E:\Temp\KB933729.log	True	12 KB	S-1-5-21-789336...	sanctuary
08.01.2009 14:53:41.093	E:\Temp\KB931784.log	True	15 KB	S-1-5-21-789336...	sanctuary
08.01.2009 14:53:41.865	E:\Temp\KB931836.log	True	26 KB	S-1-5-21-789336...	sanctuary
08.01.2009 14:53:42.576	E:\Temp\KB932168.log	True	12 KB	S-1-5-21-789336...	sanctuary
08.01.2009 14:53:43.327	E:\Temp\KB933360.log	True	21 KB	S-1-5-21-789336...	sanctuary
08.01.2009 14:53:44.108	E:\Temp\KB933566.log	True	18 KB	S-1-5-21-789336...	sanctuary
21.01.2009 10:53:16.389	E:\encryption.pdf	True	1 MB	S-1-5-21-789336...	sanctuary
21.01.2009 10:53:20.705	E:\Architecture.pdf	True	1 MB	S-1-5-21-789336...	sanctuary
21.01.2009 10:53:25.392	E:\citrix_guide.pdf	True	344 KB	S-1-5-21-789336...	sanctuary
21.01.2009 10:53:27.635	E:\Device Scanner.pdf	True	912 KB	S-1-5-21-789336...	sanctuary

Criteria

Prop	Value	Prop	Value	Prop	Value
Type	WRITE-GRANTED	Traced O...	21.01.2009 09:53:16.389	Traced O...	21.01.2009 10:53:16.389
Traced O...	21.01.2009 10:53:16.389	Transferr...	21.01.2009 10:09:21.437	Transferr...	21.01.2009 11:09:21.437
File Name...	E:\encryption.pdf	File Path	E:	File Name	encryption
File Ext.	pdf	Attachment	True	Size	1080631 bytes
SID	S-1-5-21-789336058-19579...	Computer	sanctuary	Device C...	Removable

View... Save as... Add devices...

Connected to : SANCTUARY.INSINOVANET.CH  
10.1.12.144

Connected at : 11:10:31 Last Update : 11:10:58

Connected as SANCTUARY\Administrator as an Enterprise Administrator:

Ready 11:11:22

Start AAB Sanctuary Managem... 11:11