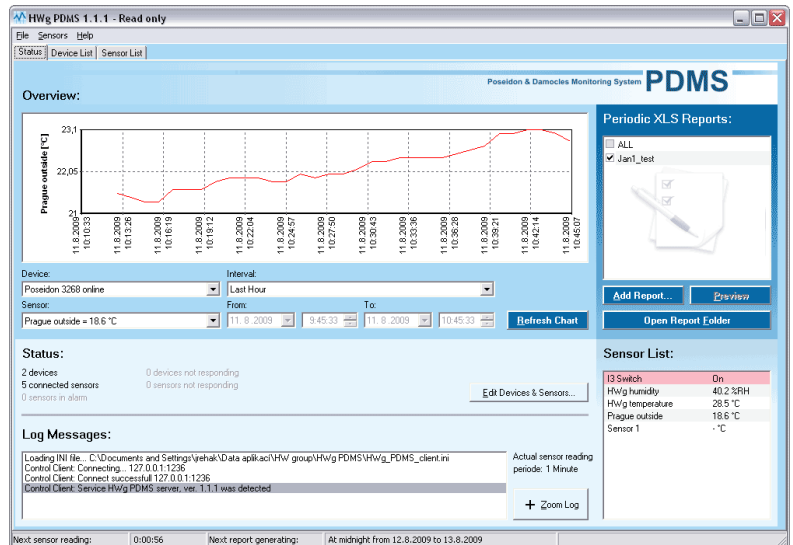


# HWg-PDMS

Windows application for data logging and MS Excel reporting.

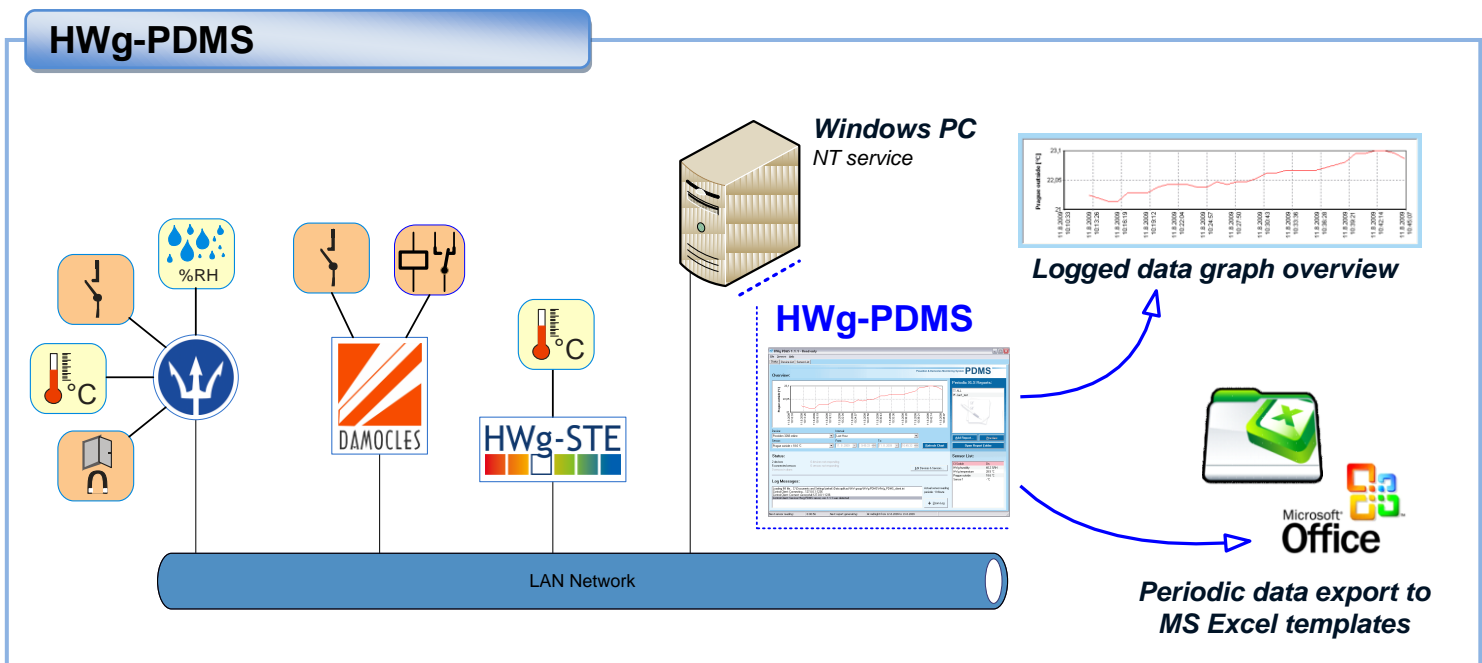
PDMS (Poseidon & Damocles Monitoring System) periodically reads the values of inputs and sensors from devices connected to a LAN.

Stored data are periodically exported as MS Excel reports.



- 1) Registered version is free of charge for one year.
- 2) Data can be easily exported to MS Excel.

- Data collection runs in the background as a Windows service
- Data are collected over a LAN (via http and the device IP address / via an e-mail account)
- Data are stored in the internal database
- Graphical overview of the collected data
- **MS Excel reports:**
  - **Template:** A MS Excel (XLS) file that imports data using macros. It is created by the PDMS software. User can edit the template.
  - **Data file:** XML file periodically generated by PDMS and containing values from selected sensors.



### Data input

- **Polling over IP** (http)
  - HWg-STE
  - Poseidon (all models)
  - Damocles (all models)
- **From an e-mail account** (POP3)
  - Poseidon 2251

### Functions

- Data collection into a database
- Values can be plotted in a graph
- Manual export to MS Excel (selectable sensors and period)
- Periodical export to MS Excel (selectable sensors and period)

### Licence

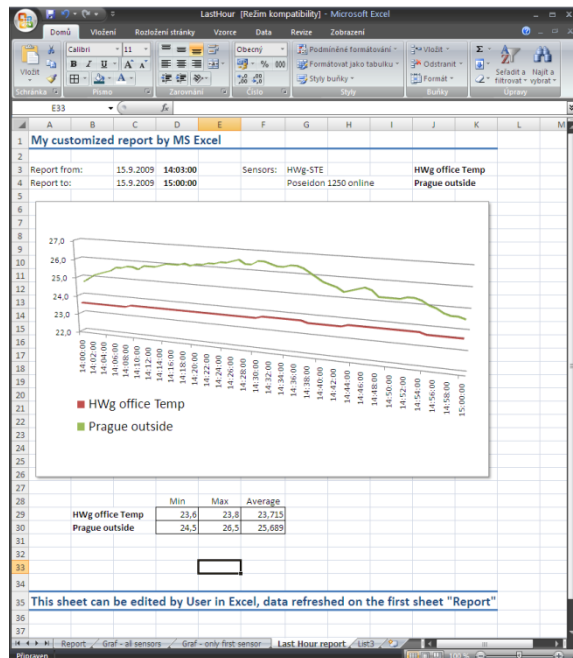
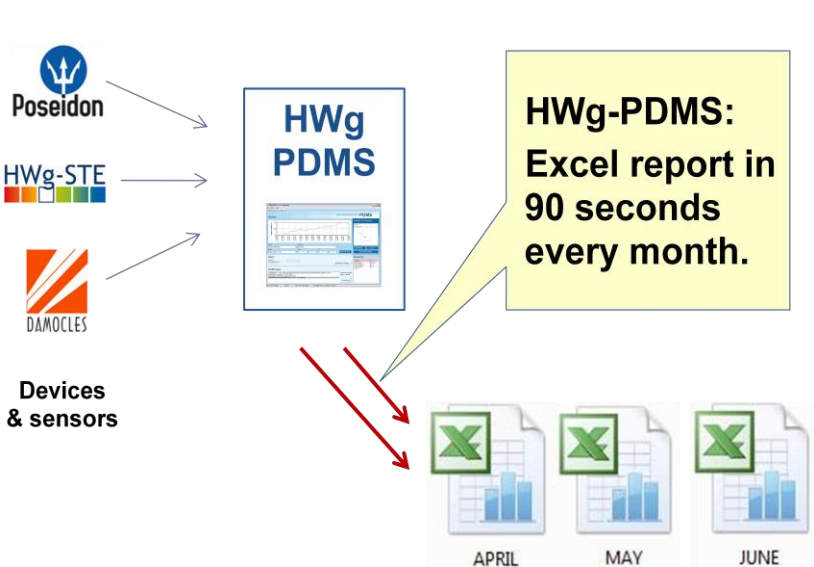
- **PDMS Trial:** 3 months, max 3 sensors
  - Registered Trial: 1 year, max 3 sensors
- **PDMS 8:** Max 8 sensors
- **PDMS 20:** Max 20 sensors
- **PDMS unlimited:** Max 250 sens. / 100 dev.

### System parameters

- The core runs as a NT service
- Windows 2000/XP/Vista, 2000/2003 Server
- Settings protected by password and administrator-only access

### Typical HWg-PDMS users

- **Audit:** End user that needs data logging (operations / storage audit).
- **Outsourcing:** Record of the quality of the provided services. The generated MS Excel summary can be attached to the invoice as a quality assurance measure.
- **Operations logs:** Maintaining a history record that can be manually exported to MS Excel if needed.



Product ordering numbers		
600 386	HWg-PDMS 8	Commercial version, max 8 sensors
600 387	HWg-PDMS 20	Commercial version, max 20 sensors
600 388	HWg-PDMS unlimited	Commercial version, max 250 sensors on 100 devices